

The Covenant of St Vincent's School

Our Catholic parish school community at Clear Island Waters honours its founders, the Sisters of Mercy and our patron, St Vincent. Our shared belief in Jesus Christ inspires our vision to make a lasting and positive difference to all.

St Vincent's School is located by a beautiful lake, has pleasant surroundings, is well resourced and is an exciting place for children to play and learn. We are enriched by caring and giving people, helpers of all kind, delightful children and thoroughly professional staff. Our welcoming community shares its gifts and talents generously and reaches out to others.

Enriching Life
In the spirit of the Gospel we treasure community partnerships, relationships, our supportive environment, camaraderie, caring and fun.
We:
1. Value and know each and every member of our family.
2. Foster inclusiveness and respect individuality.
3. Nurture emotional wellbeing.
We accept this sacred stewardship

Catholic Spirit Alive
In the faith and wider community we collaboratively engage in the ministry of the Catholic Church.
We:
1. Live as a prayerful sacramental Catholic Community.
2. Act with moral and ethical integrity.
3. Develop the Catholic ethos: promote the faith and teachings of Jesus Christ.
We embrace our Catholic family

Future Leaders
In the spirit of global citizenship, to live successfully as a responsible and active global and local citizen guided by the Catholic ethos.
We:
1. Prepare children to live harmoniously and productively as self-directed learners.
2. Understand and acknowledge diversity and form intercultural relationships as just and equitable stewards.
3. Develop confidence to become creative and resourceful problem solvers, who are able to meet the challenges of life with a sense of optimism.
We guide their future journey

Excellence in Education
In the spirit of contemporary education, in partnership with parents, we focus on essential learning, student growth and 21st Century education. We engage in life-long, life-giving learning, which engages the whole person.
We:
1. Develop productive and successful learners, active in their learning.
2. Monitor student progress, our programs and their outcomes.
3. Commit to being progressive educators.
We strive for excellence

Shared Stories, Vibrant Memories, Creating the Future Together

Quality • Relationships • Understanding, Tolerance and Inclusion • Dignity and Justice
Stewardship • Embracing Life • Honesty, Integrity and Trustworthiness
Responsibility • Care and Compassion • Spirituality and Faith

The Covenant and Charter of St Vincent's School is available on the school's website or a full size copy is available from the school.

www.stvincinctsps.qld.edu.au

ST VINCENT'S PRIMARY SCHOOL
A place of shared stories and vibrant memories

ST VINCENT'S SCHOOL
CLEAR ISLAND WATERS

SCHOOL CONTACT DETAILS

Phone: 55721699

Email: probina@bne.catholic.edu.au

SCHOOL CONTACT PERSONNEL

Principal
Kerry Rowlands

Assistant Principals
Rafal Balik
David Boulton

Support Teacher (IE)
June Noblet
Damian Kelly

Guidance Counsellor
Tony O'Shea
Ainslie Wheeler

ST VINCENT'S PRIMARY SCHOOL
A place of shared stories and vibrant memories

**Enrolment Application
and
Support Procedures
for
Students requiring Significant
Educational Adjustments**

Introduction and Rationale

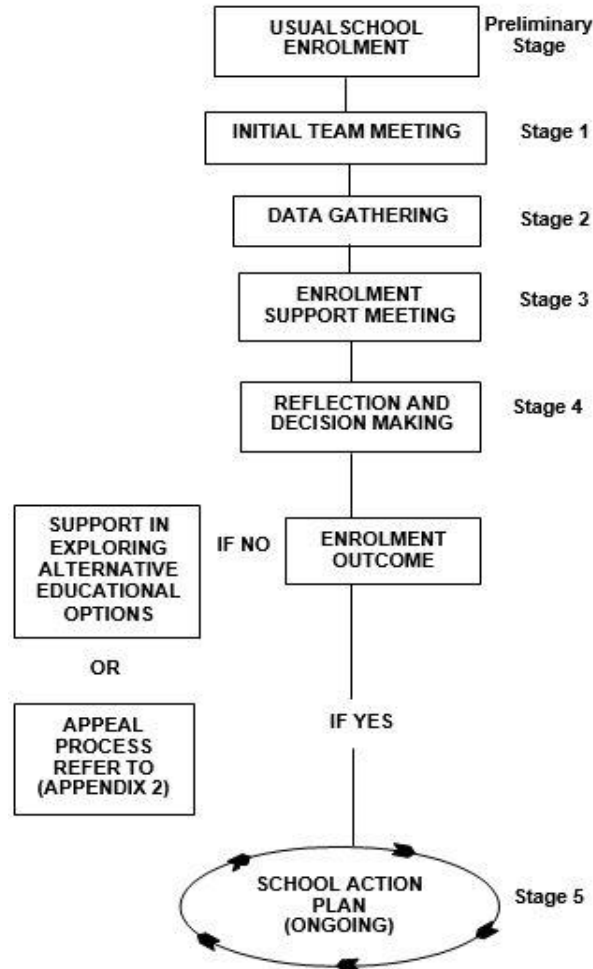
The Enrolment Application and Support Procedures for Students requiring Significant Educational Adjustments operates within the Policy – Students with Disabilities for Brisbane Catholic Education schools.

This policy reflects the ongoing commitment of Brisbane Catholic Education to the incorporation of inclusive practices in schools and is guided by the principles of justice as reflected with Church, education and legal areas. The enrolment of a student requiring significant educational adjustments is the concern of the whole school community within the church.

The process seeks to reveal and clarify the characteristics of the learner, and to assess the relevant adjustments for accessing the learning and the implications of these for the school, the family and the student.

A partnership approach is foundational to this process and leads to an appropriate response to the student's educational needs. The enrolment application and support procedures are used when it is considered likely that significant educational adjustments will be needed to support a student's initial enrolment and/or for ongoing service provision.

ENROLMENT APPLICATION AND SUPPORT PROCEDURES For Students requiring Significant Educational Adjustments



Preliminary Stage

- **Make Application for Enrolment** including all requested documentation

Stage 1 Parent Meeting

- *Student Enrolment Team meeting preparation*
- *Partnership Formed*

Stage 2 Data Gathering

- *Observe/Collect Data*
- *Explore Needs*

Stage 3 Enrolment Support Meeting

- *Examine Implications*
- *Partnership Strengthened*

Stage 4 Reflection & Decision Making

- *Principal Makes Decision*
- *Informs Relevant Others*

Stage 5 School Action Plan

- *Plan Action as Necessary*
- *Ongoing program monitoring & Review of adjustments*
- *Returning to Stage 2 (if necessary)*